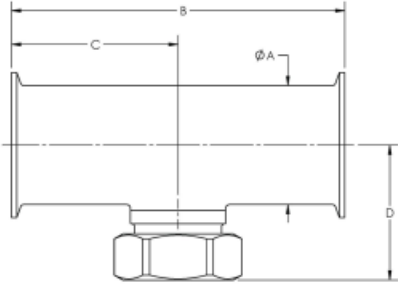




## TruStream Tri-Clamp Inspection Tees (with Hex Nut)



Material: 316L Stainless Steel  
Roughness:  $\leq 20$  Ra (Internal)



| Component          | Part Number | Diameter | B     | D    |
|--------------------|-------------|----------|-------|------|
| TruStream7         | 215141      | 1.0"     | 4.75" | 1.9" |
|                    | 215145      | 1.5"     | 5.50" | 2.1" |
|                    | 215147      | 2.0"     | 7.00" | 2.4" |
| Anderson retrofits | 215515      | 1.5"     | 4.00" | 2.1" |
|                    | 215520      | 2.0"     | 4.00" | 2.4" |
|                    | 215525      | 2.5"     | 4.00" | 2.6" |
| TruStream12        | 215124      | 2.0"     | 7.00" | 2.6" |
|                    | 215128      | 2.5"     | 7.00" | 2.8" |
|                    | 213132      | 3.0"     | 7.50" | 3.1" |